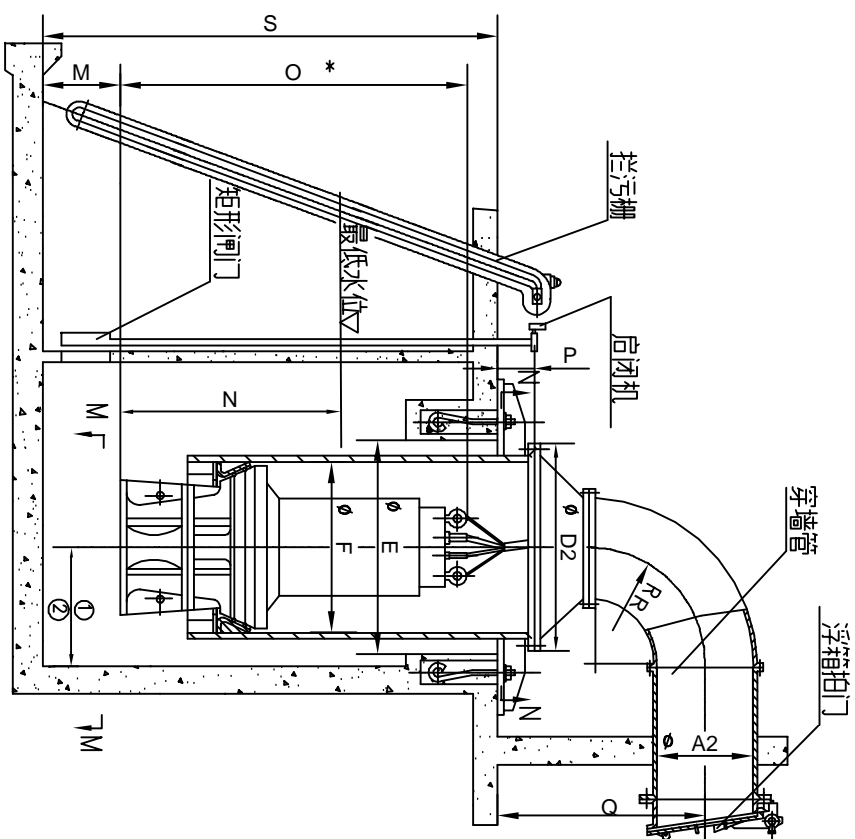
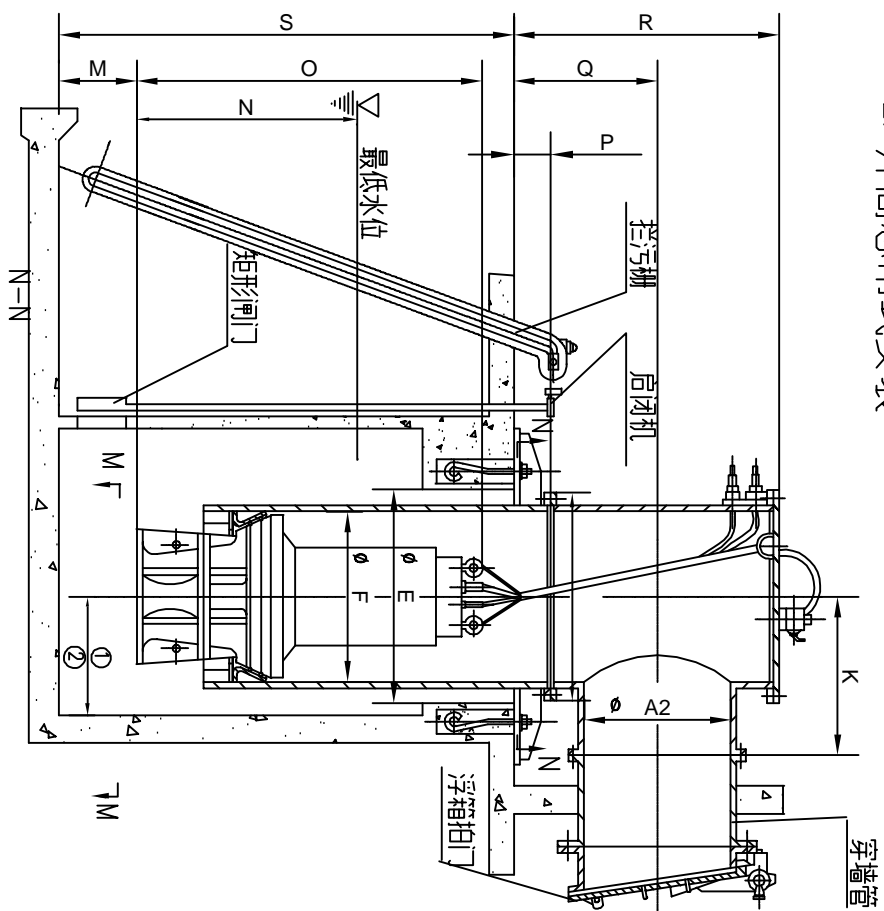


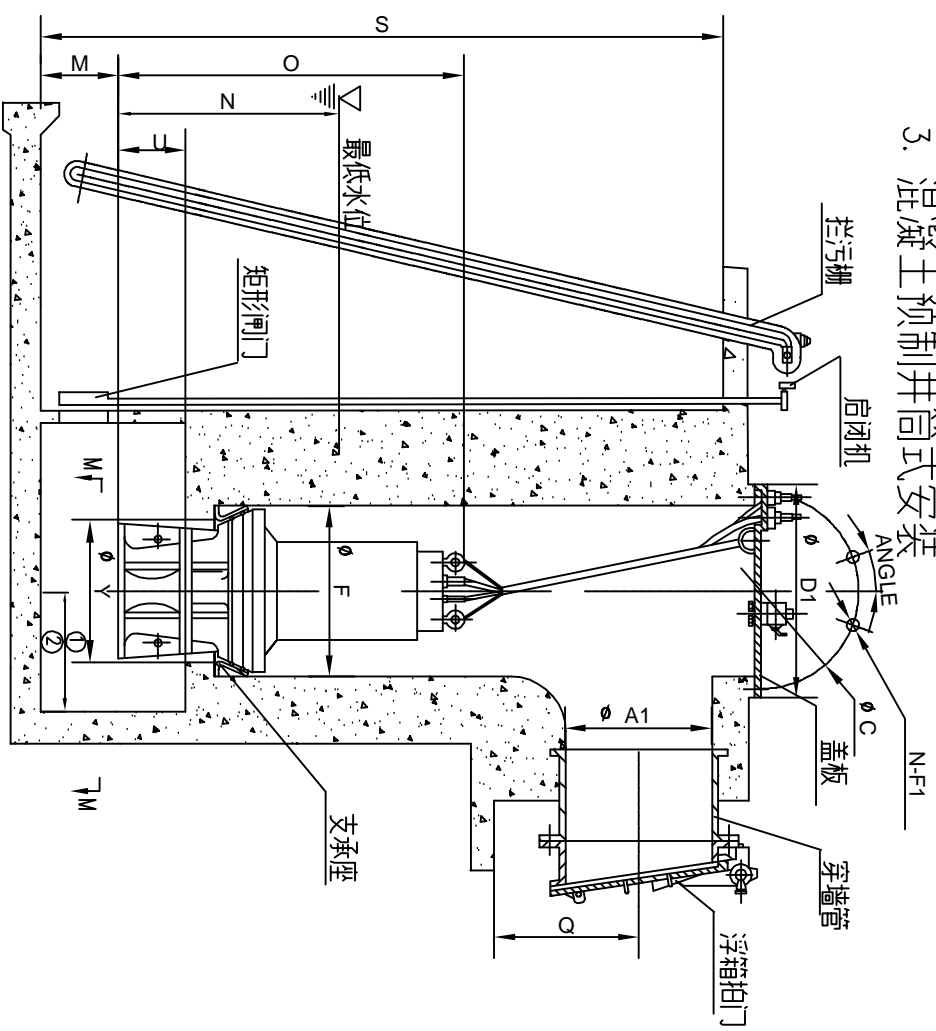
## 1. 弯管悬吊式安装



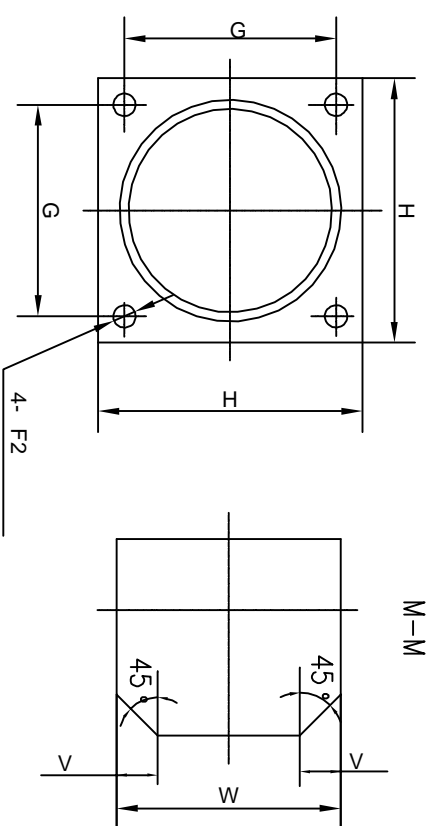
## 2. 井筒悬吊式安装



## 3. 混凝土预制井筒式安装

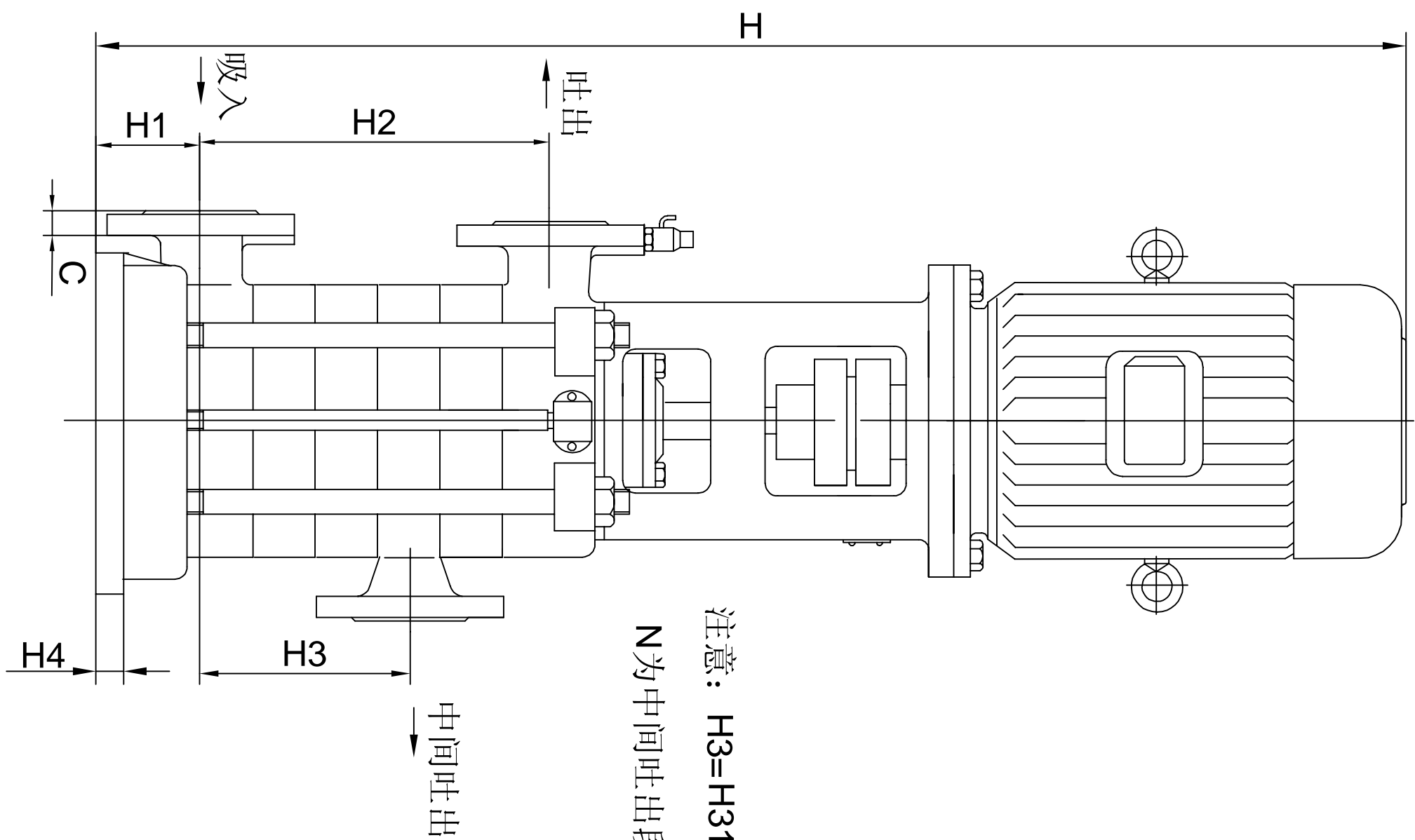


型号

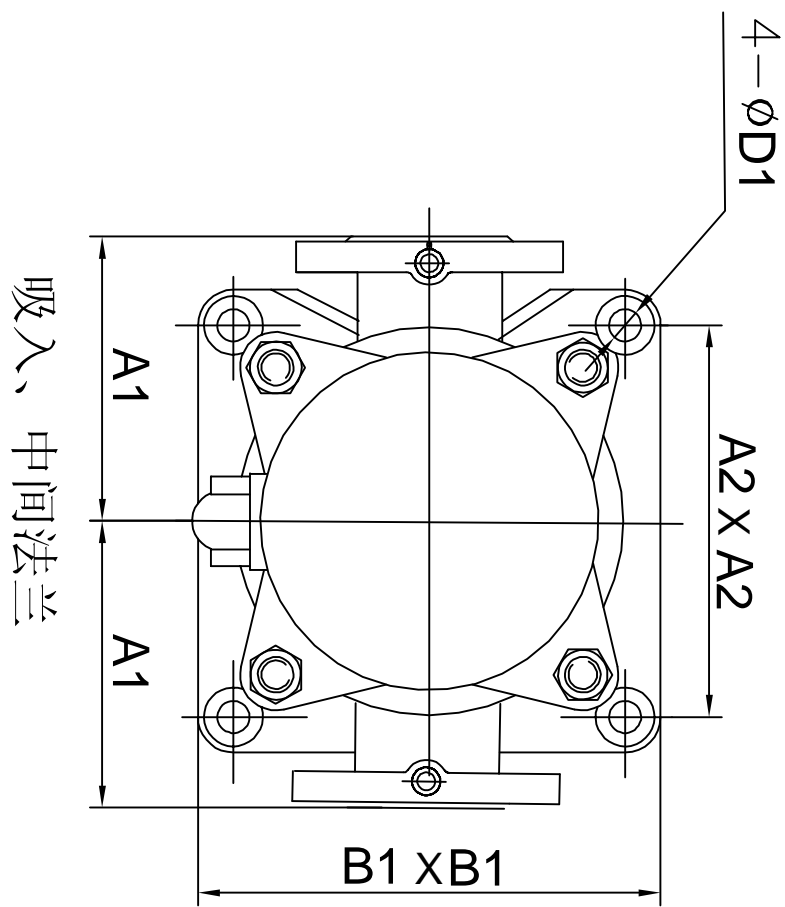


注: S.Q.R 尺寸根据用户要求确定

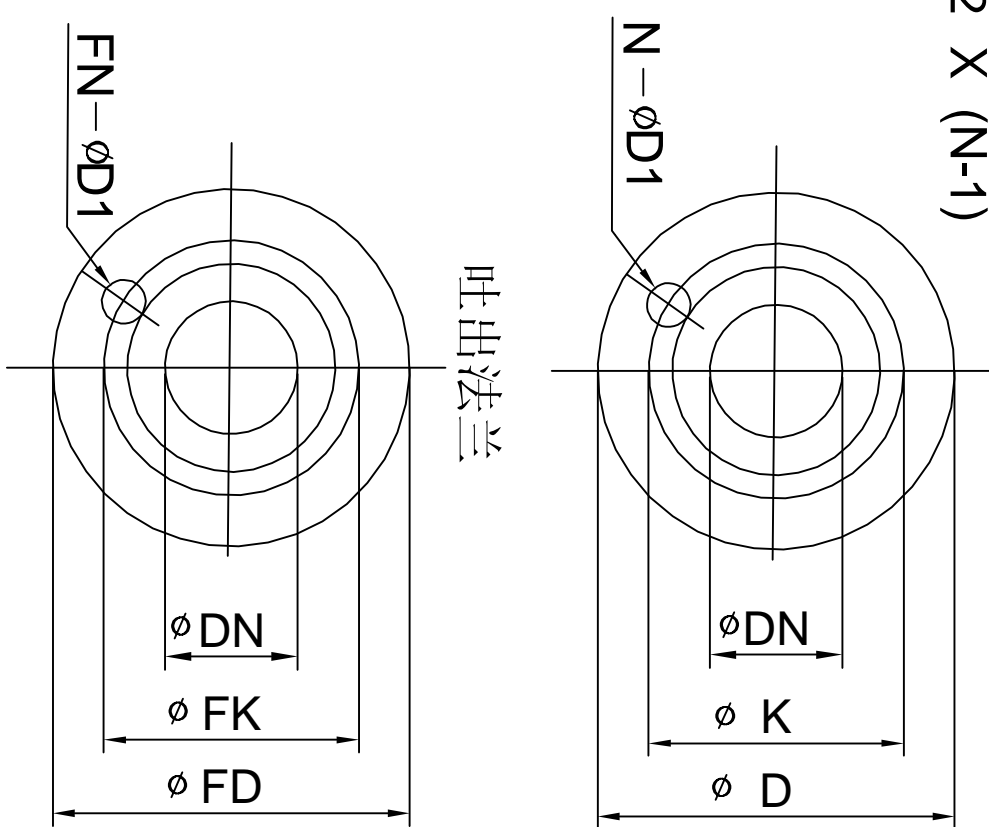
- ① 泵中心距池壁不小于
- ② 同池内两泵中心距不小于
- ③ 带\*尺寸仅供参考.



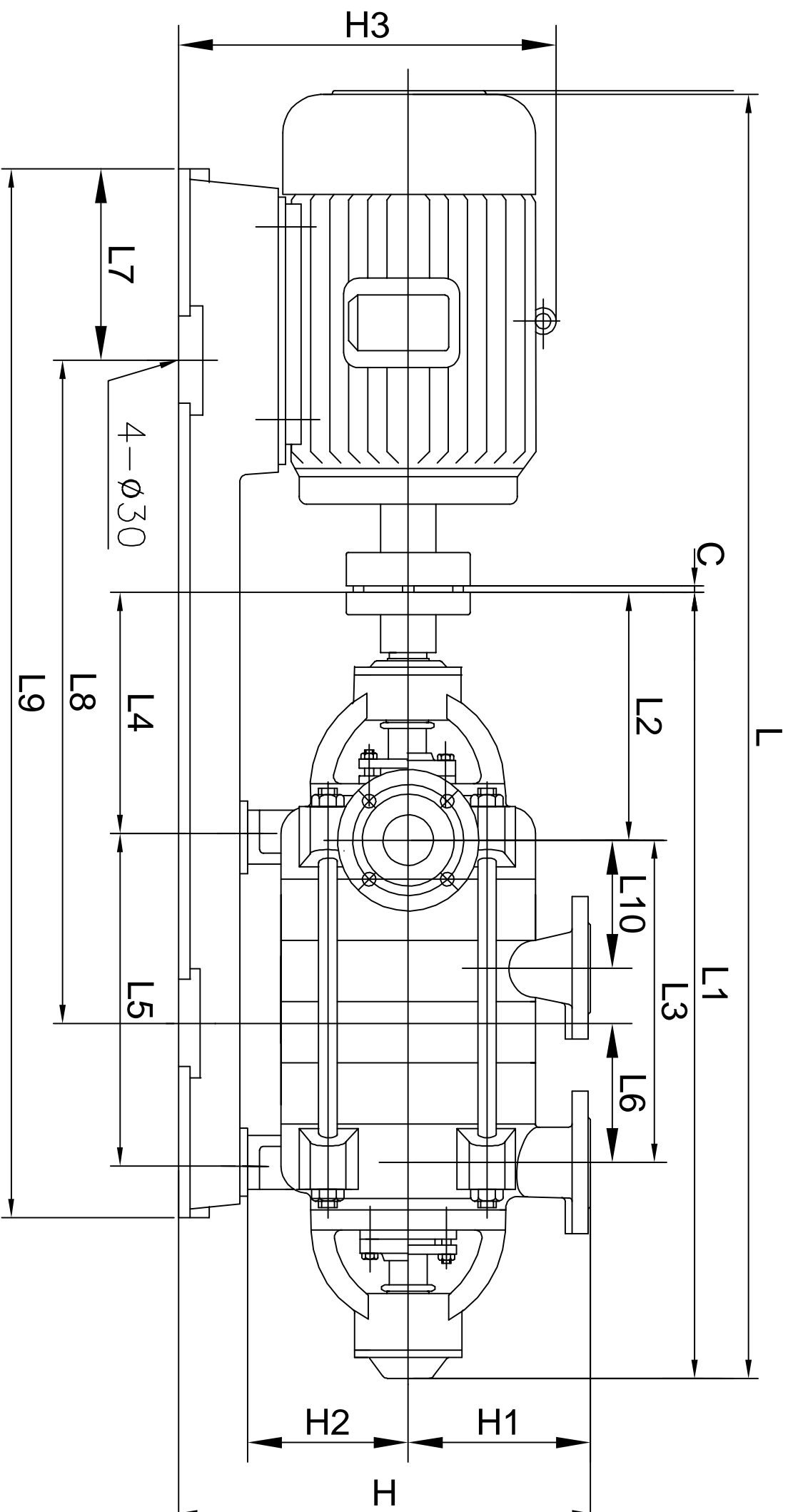
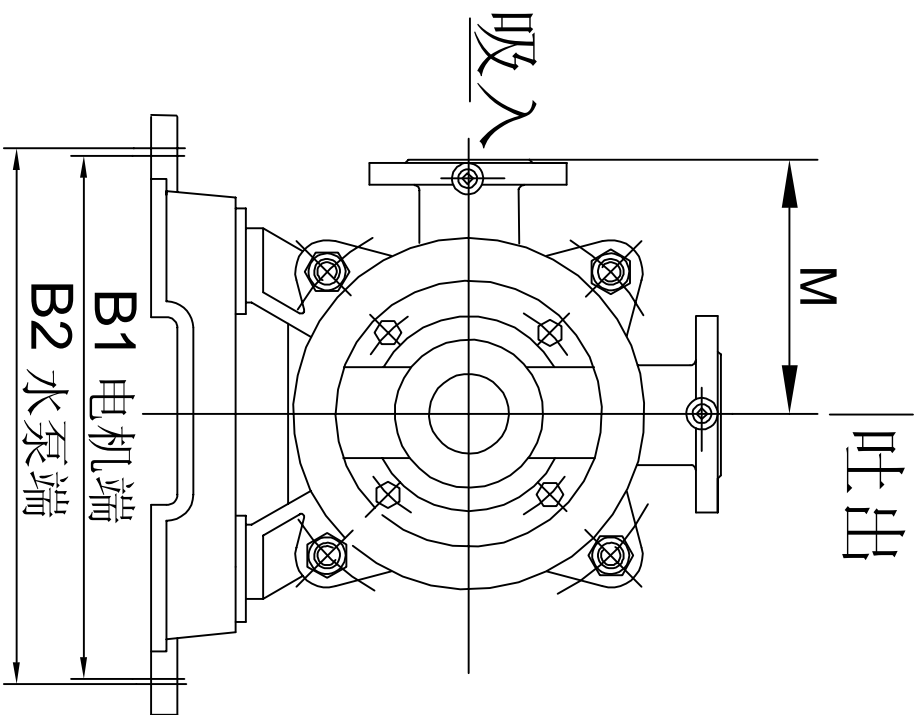
注意:  $H_3 = H_{31} + H_{32} \times (N-1)$   
 $N$  为中间吐出段级数



型号



型号

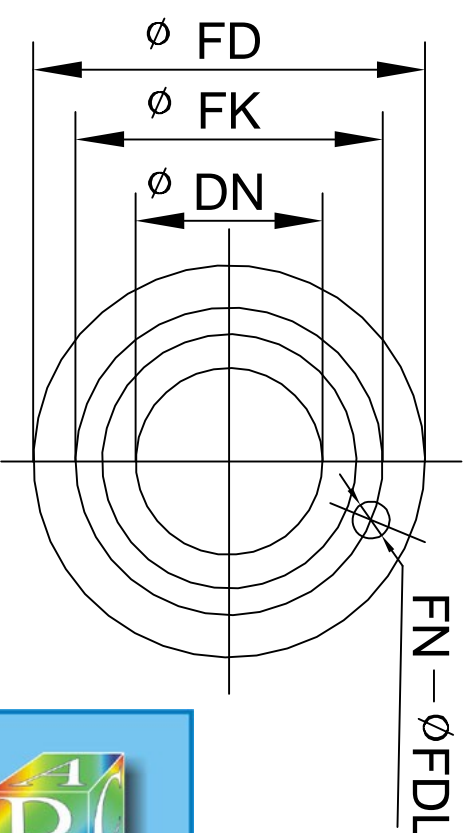
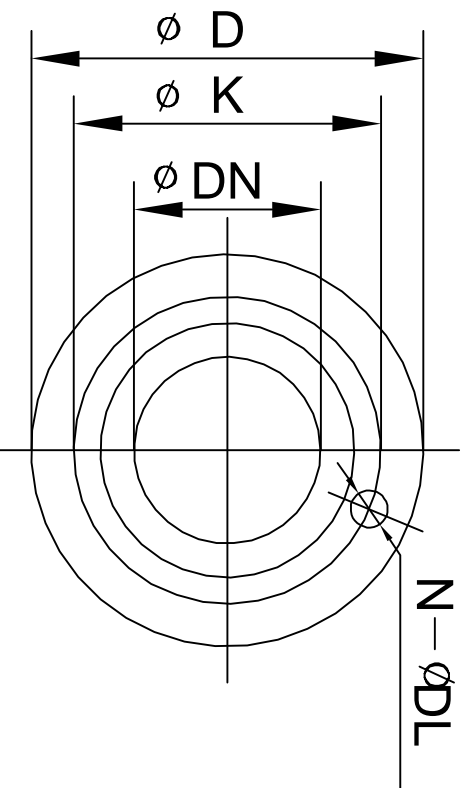


注意:  $L10 = L101 + L102 \times (N-1)$

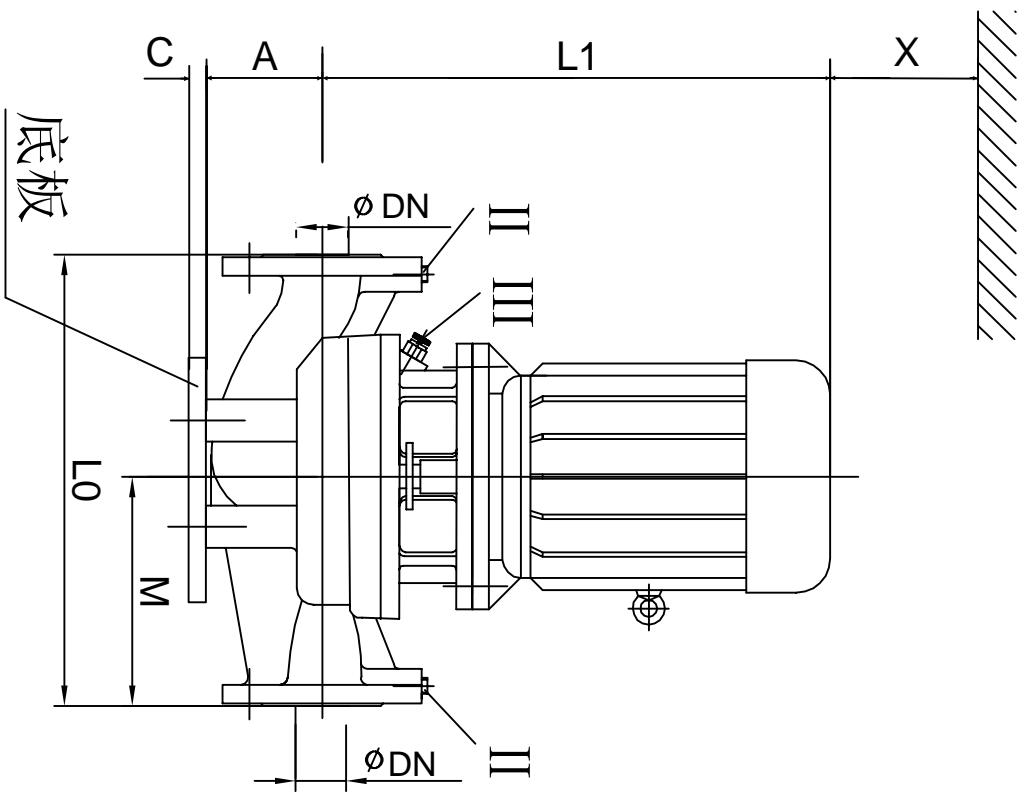
吸入、中间法兰

吐出法兰

N为中间吐出段级数



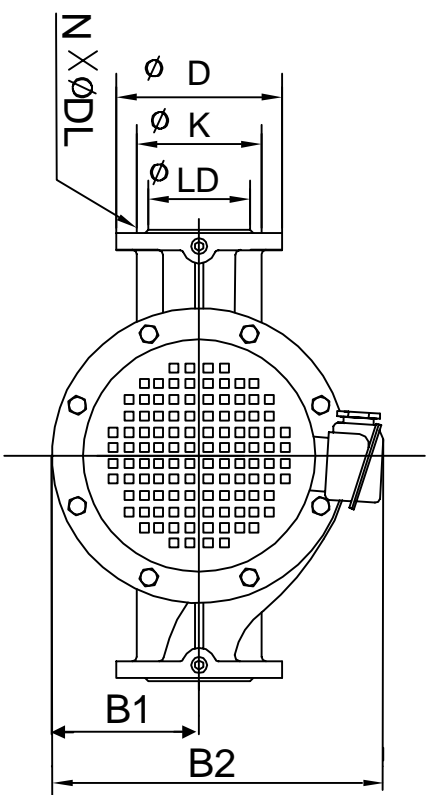
型号



II RP1 测压口

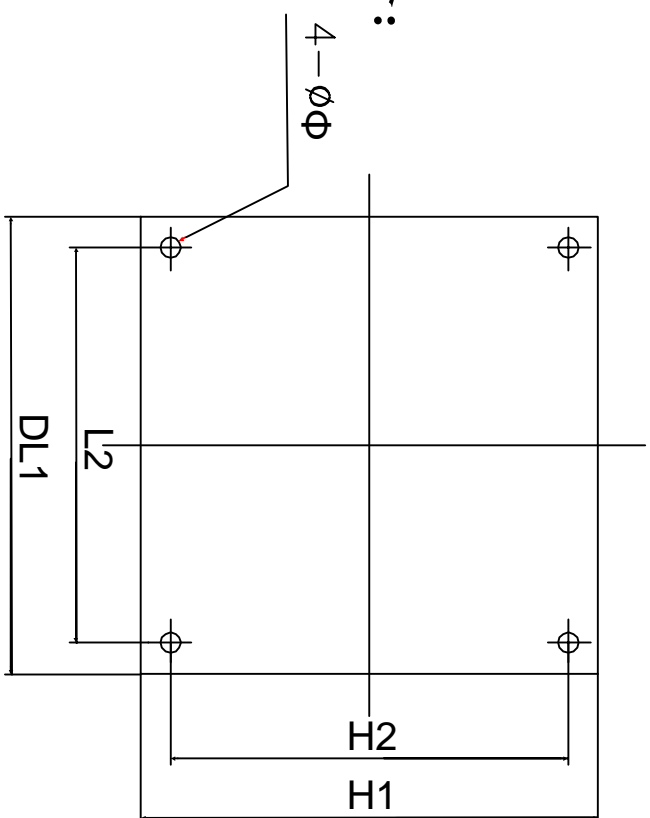
III RP2 排气口

底板尺寸

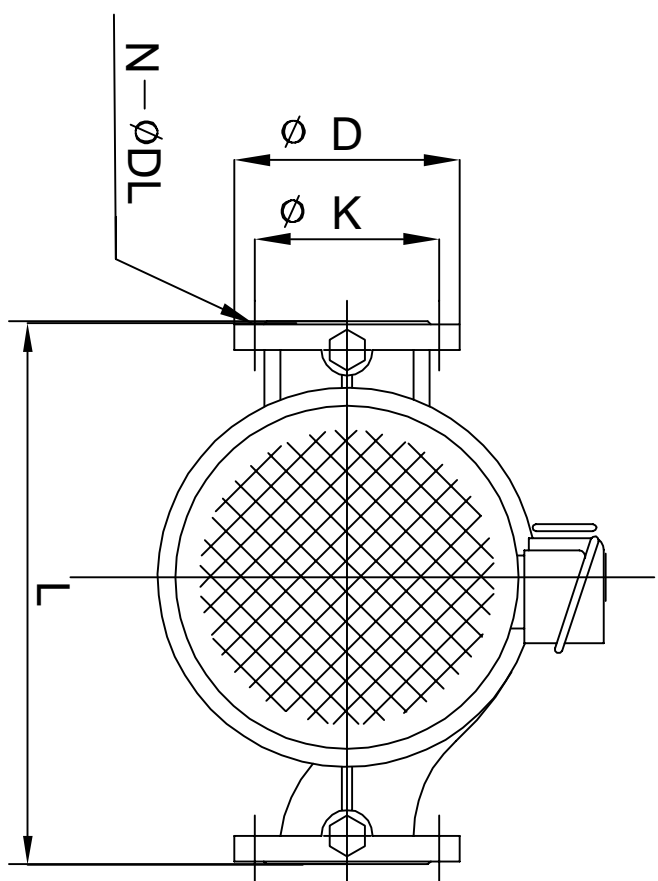
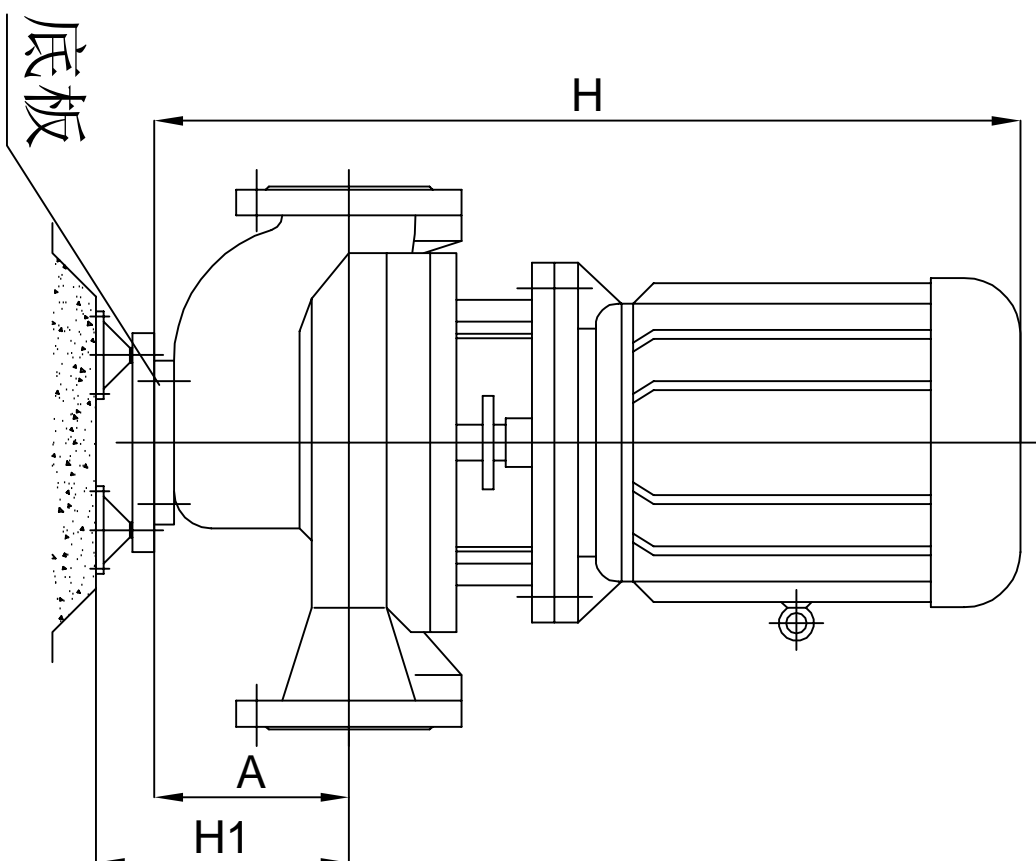


隔振器（隔振垫）规格：

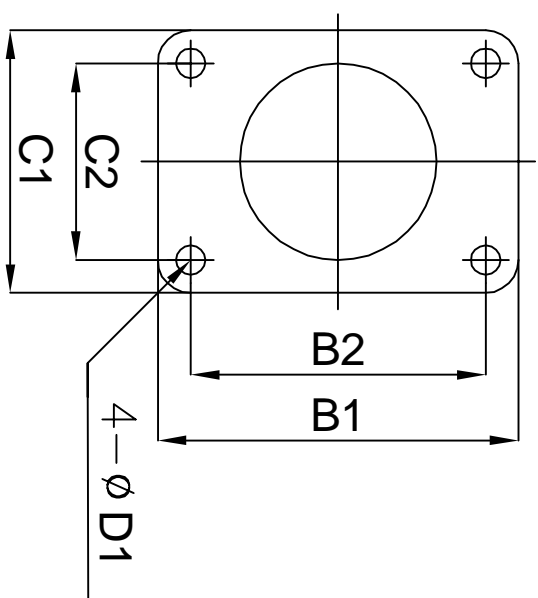
隔振垫



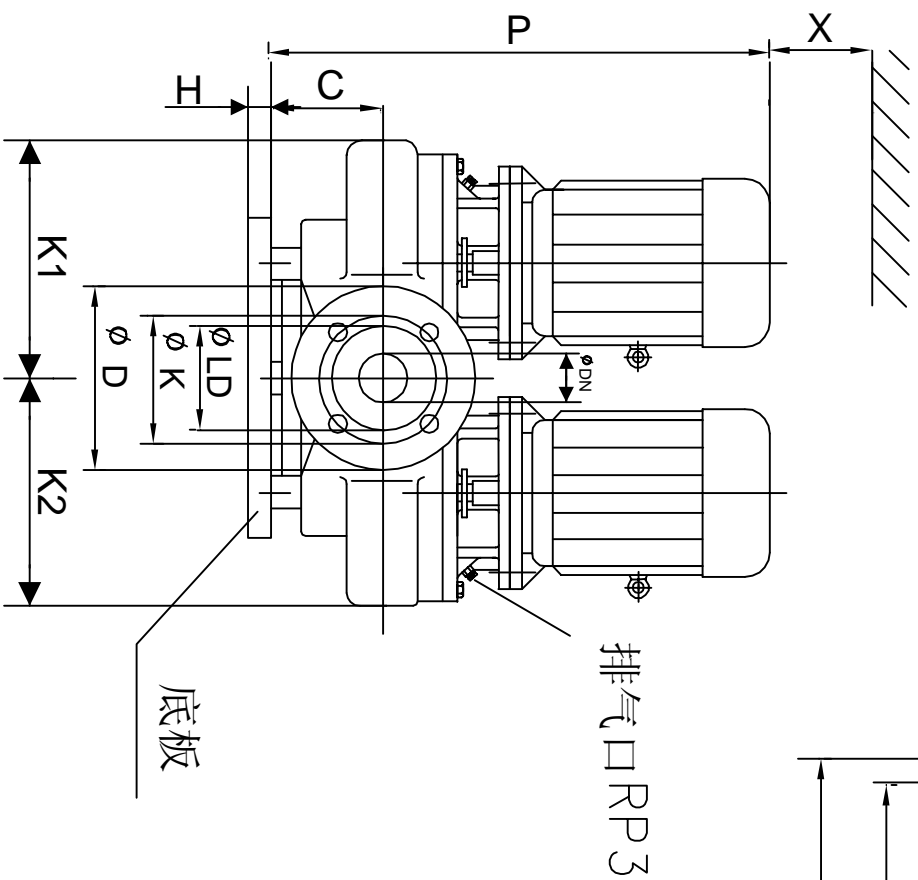
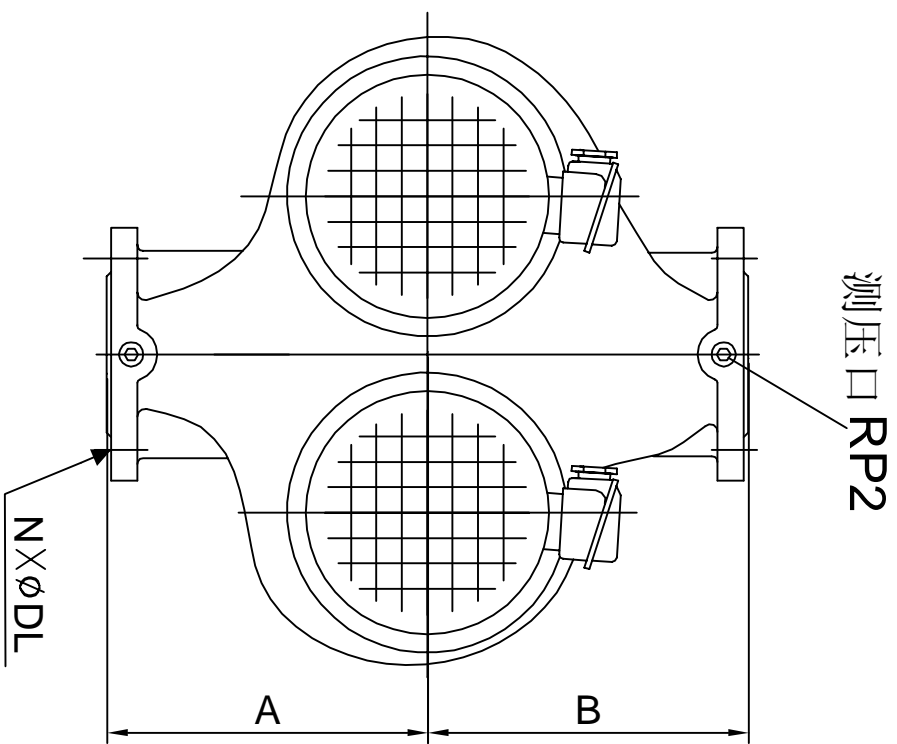
TYPE



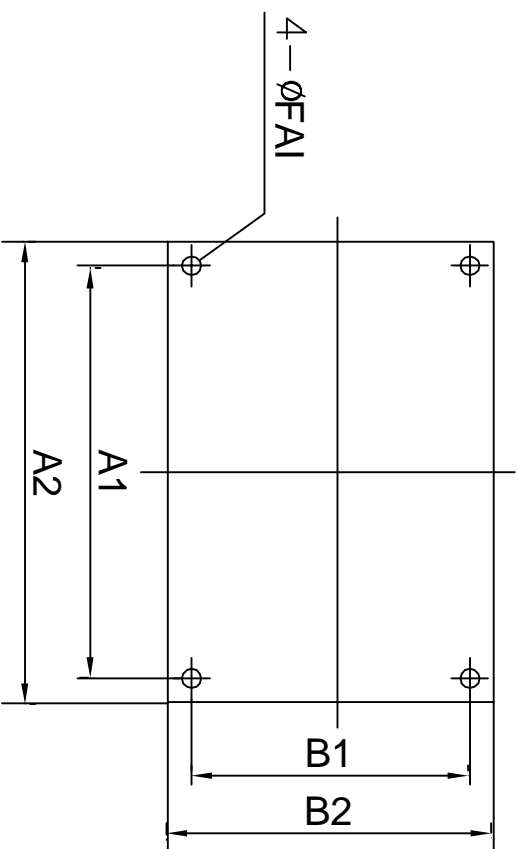
底板尺寸



型号



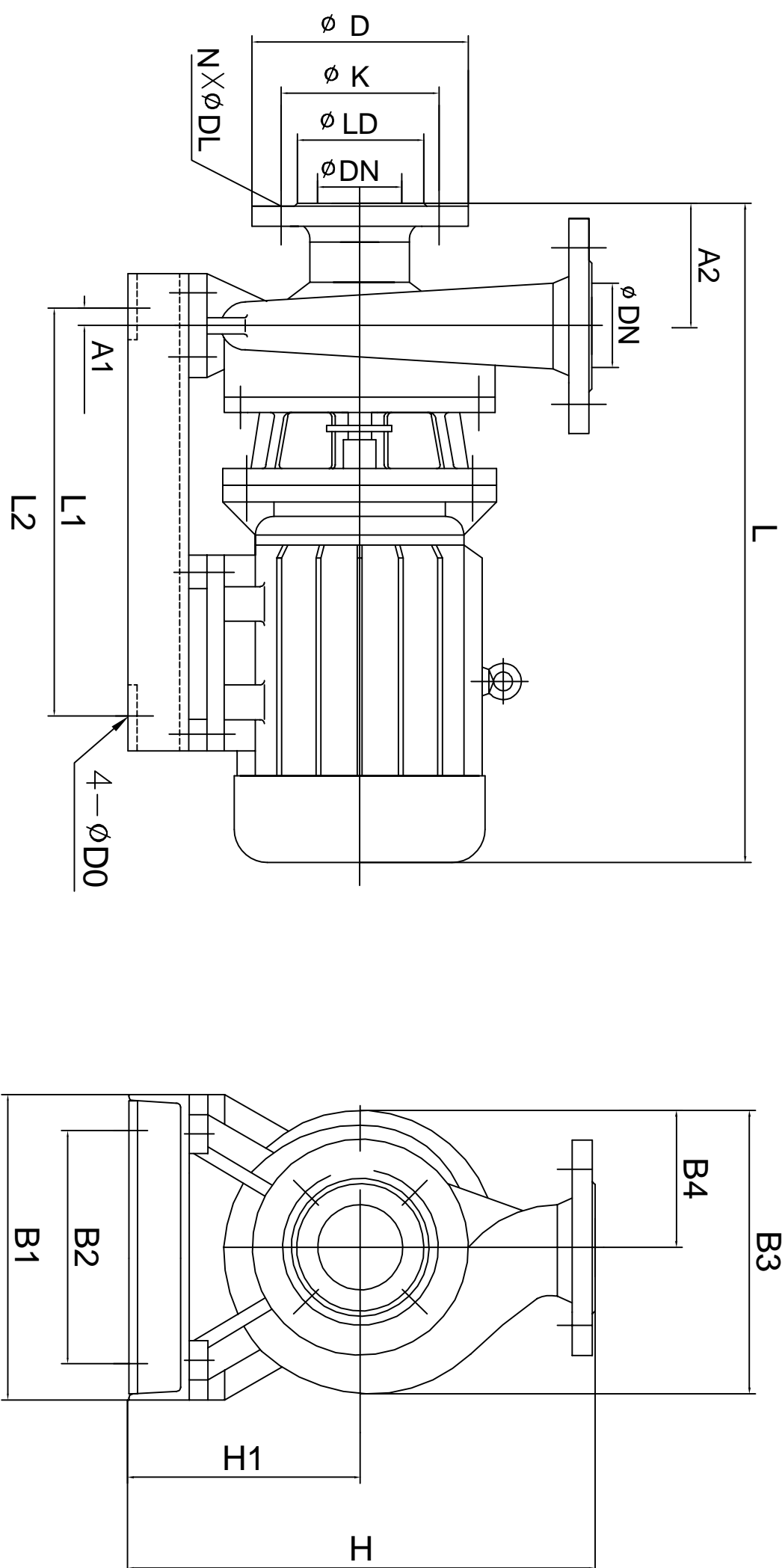
底板尺寸



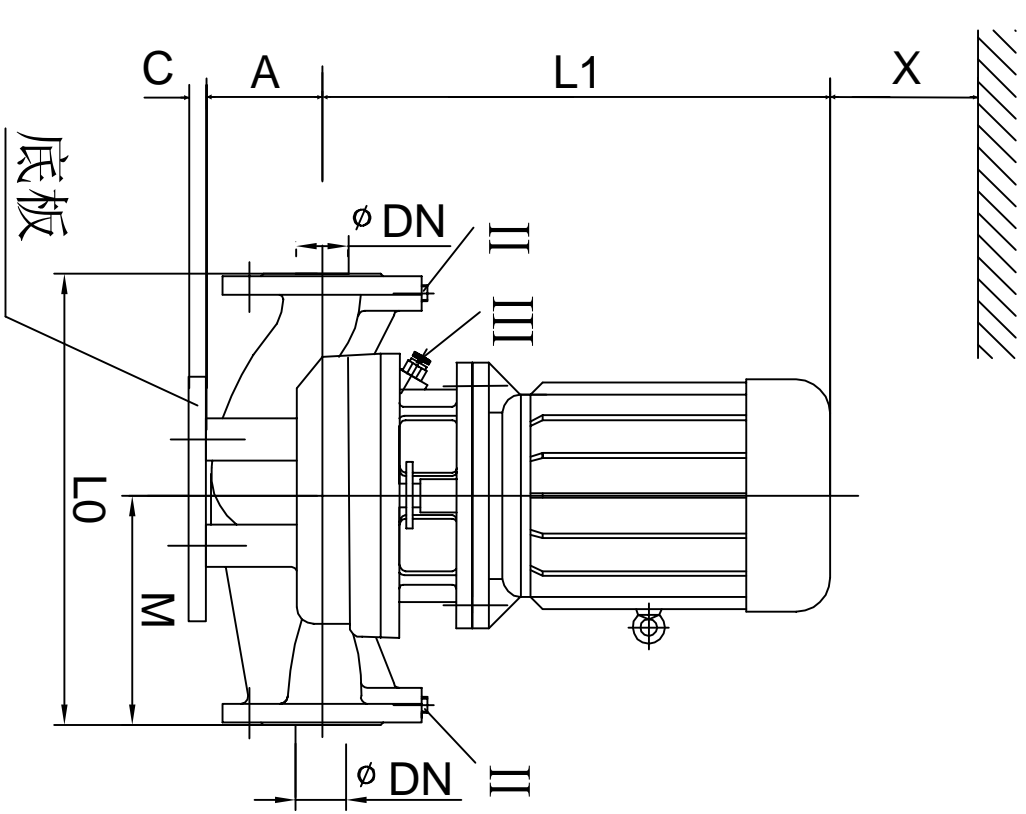
隔振垫 (隔振器) 规格:

隔振垫

型号



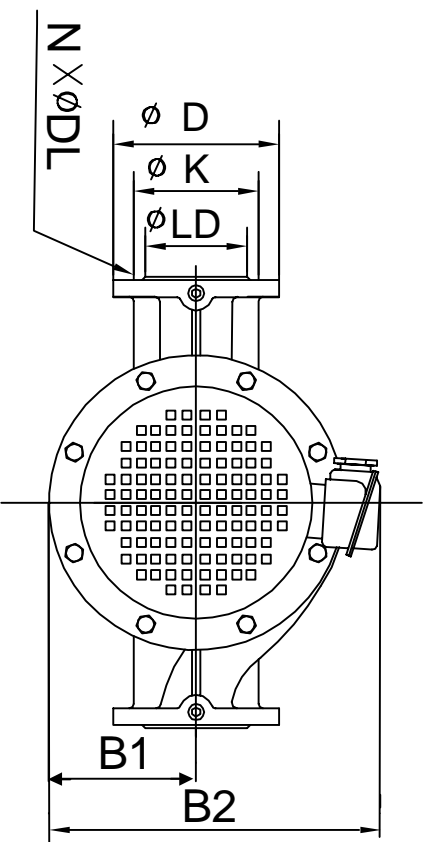
# TYPE



II RP2测压口

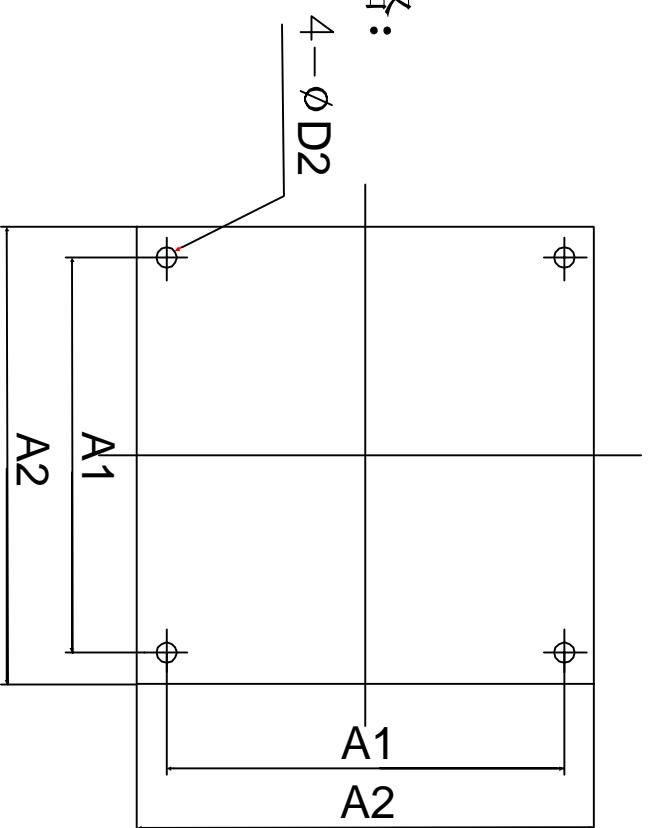
III RP3排气口

底板尺寸

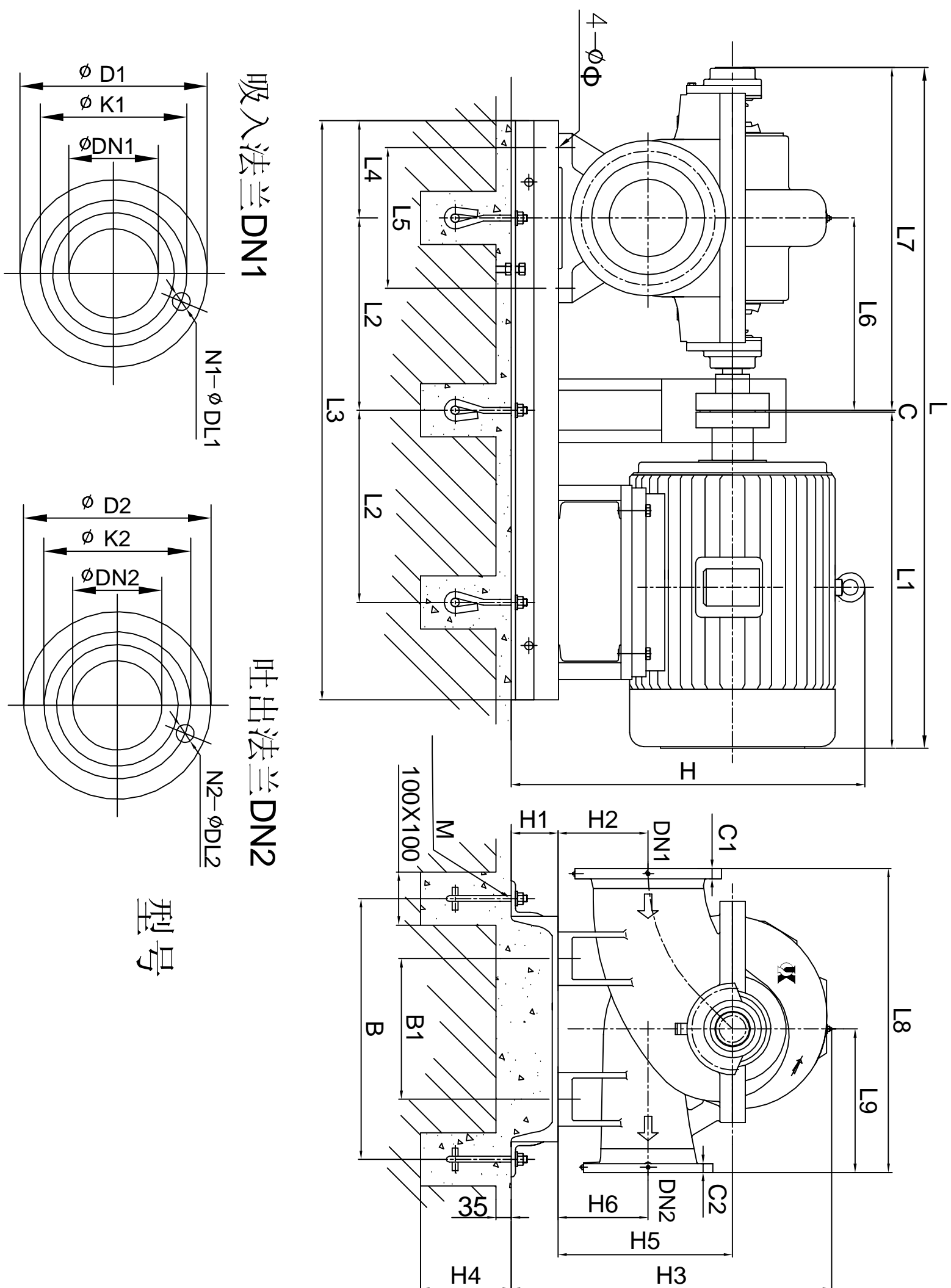


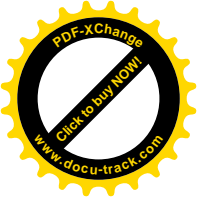
隔振器（隔振垫）规格：

隔振垫



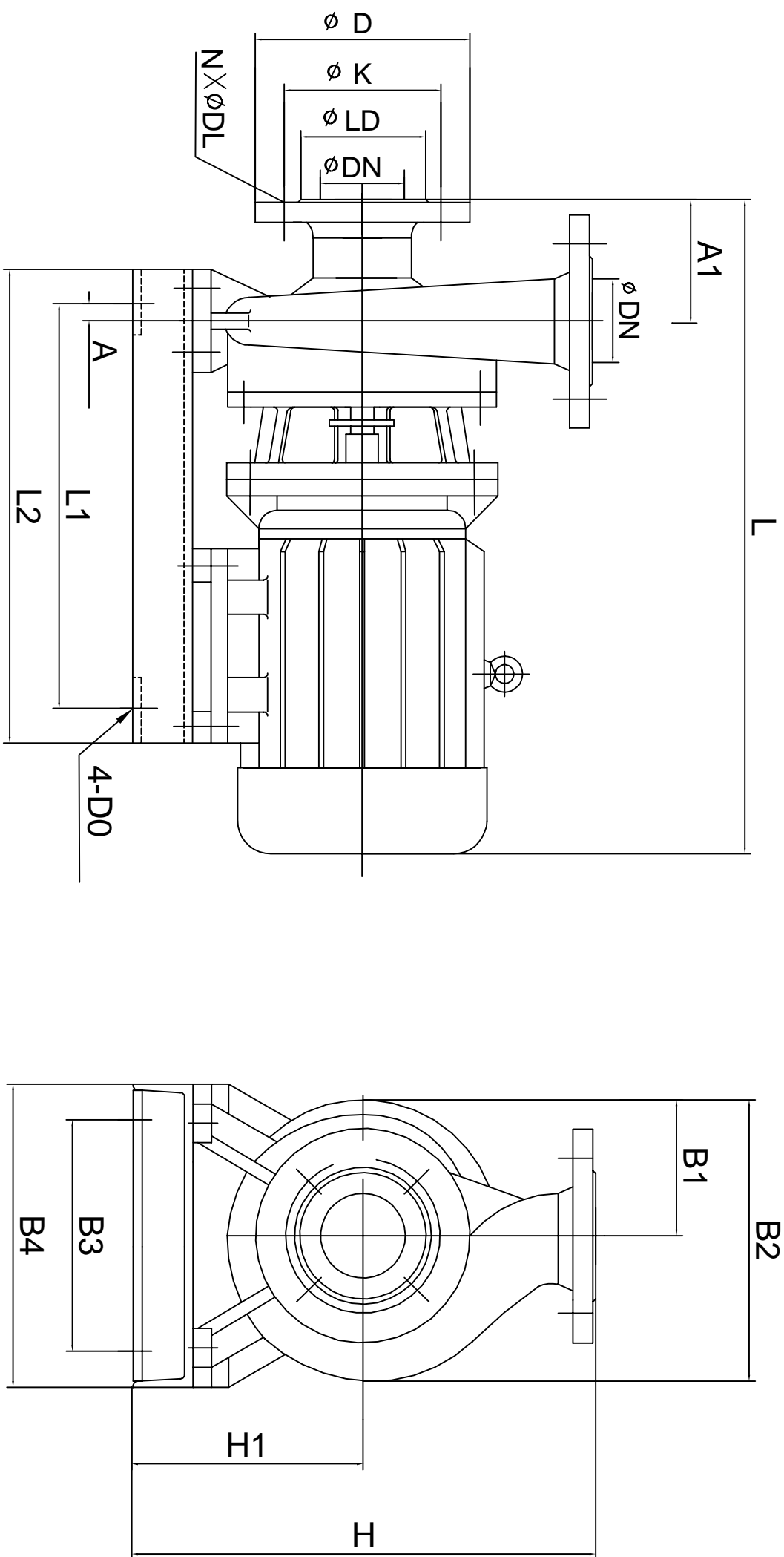


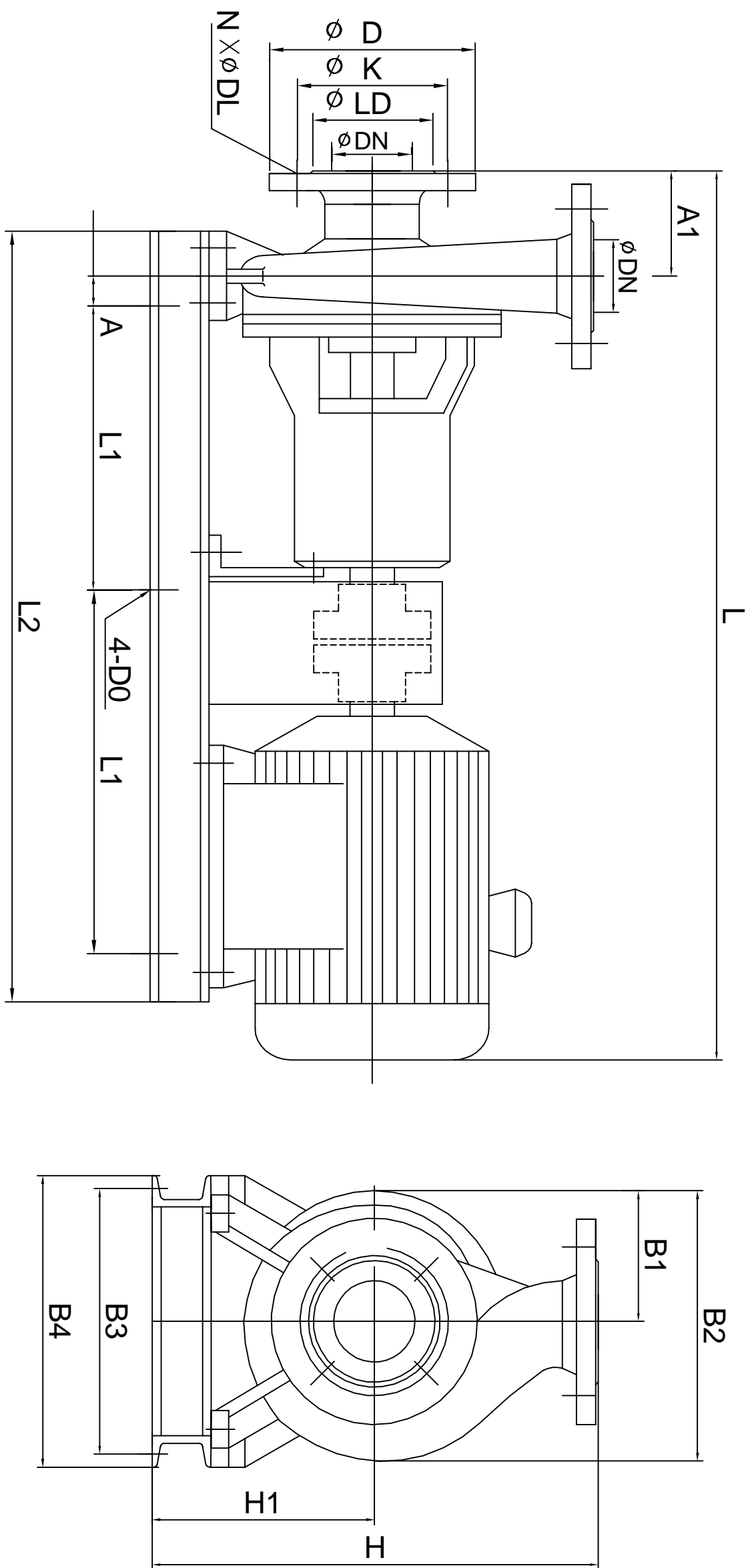




隔振垫（隔振器）规格：  
隔振垫

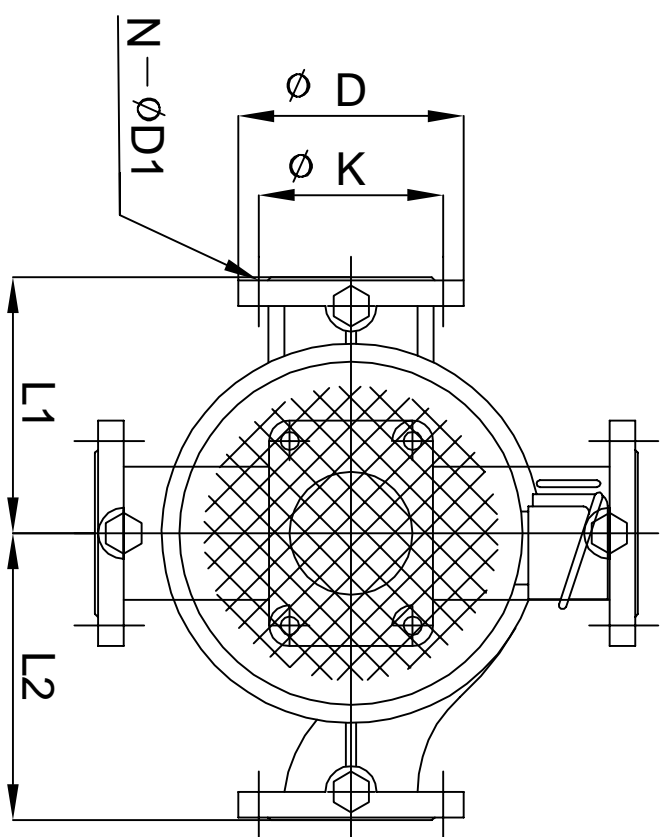
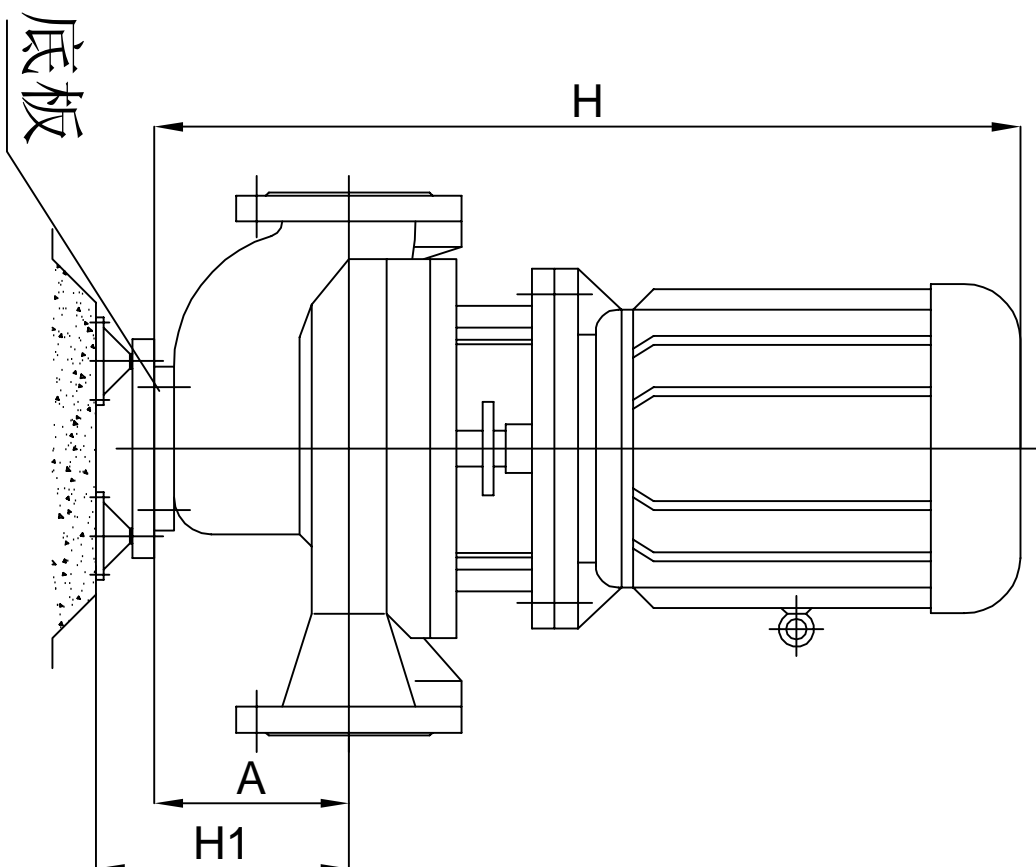
型号



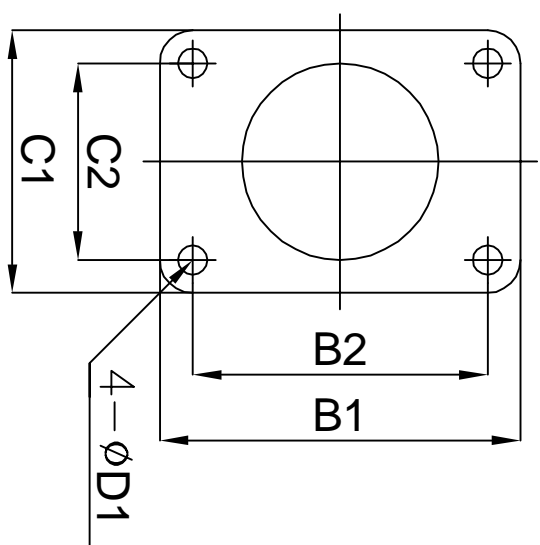


隔振器规格: JG4-2 型号

TYPE

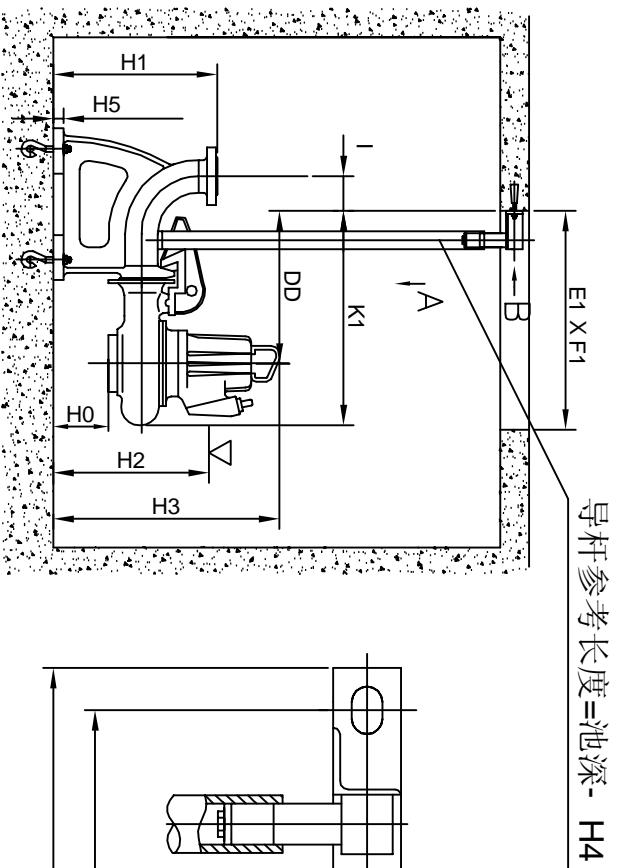


底板尺寸

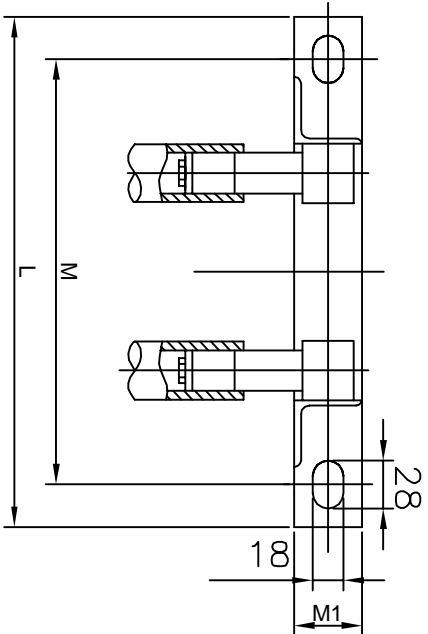


Z

自动耦合式安装

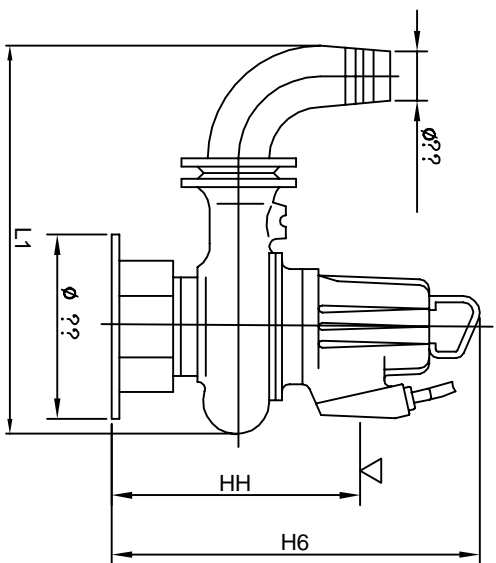


B 向



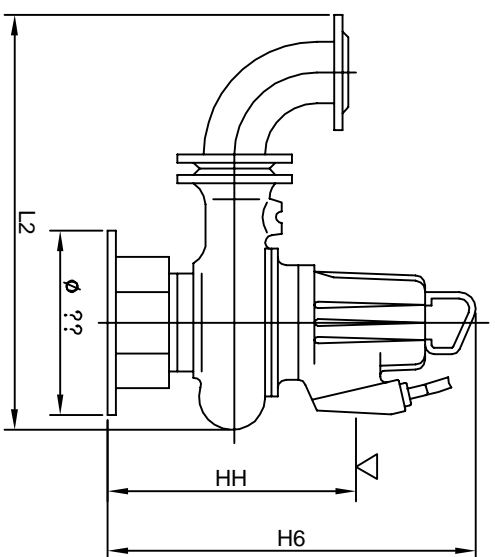
R

软管移动式安装



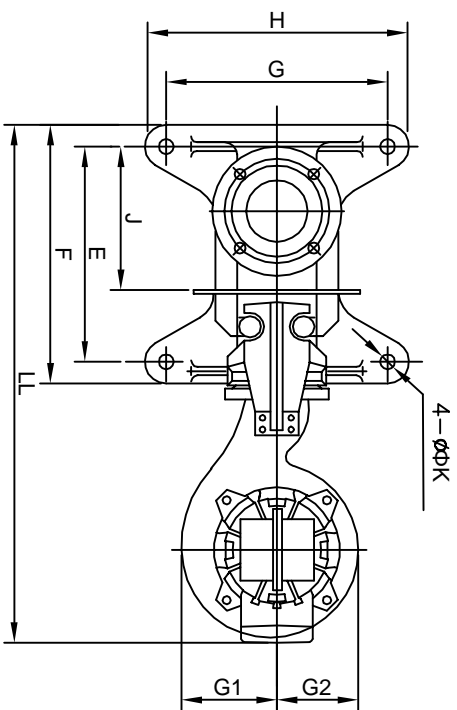
Y

硬管移动式安装

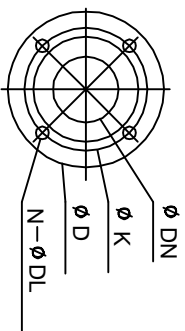


型号

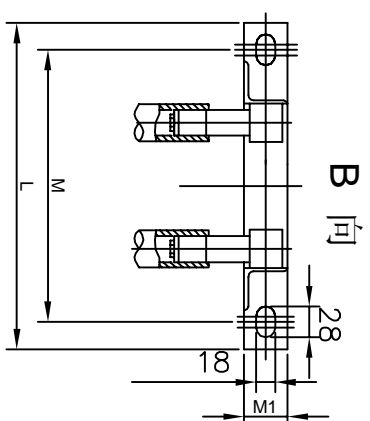
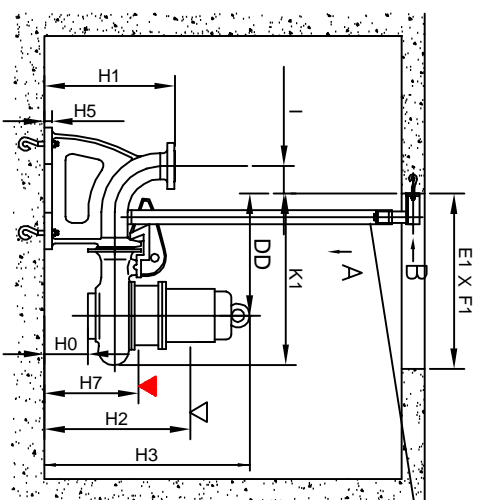
A 向



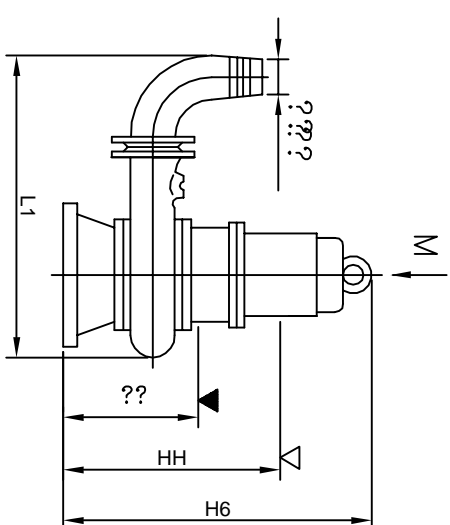
法兰尺寸



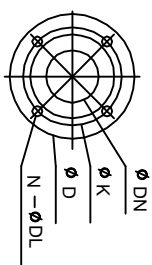
## Z 自动耦合式安装



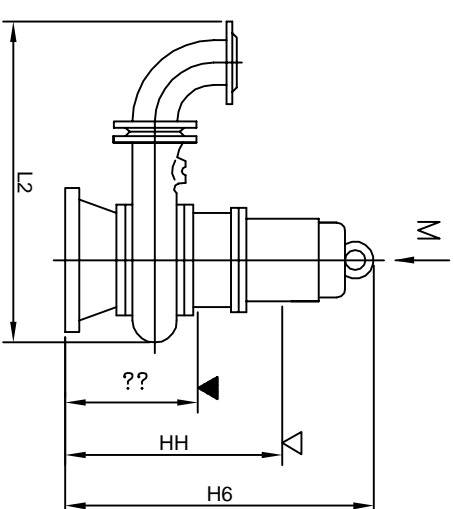
## R 软管移动式安装



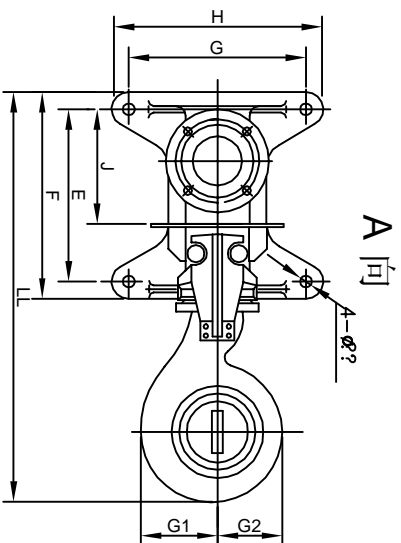
## 法兰尺寸



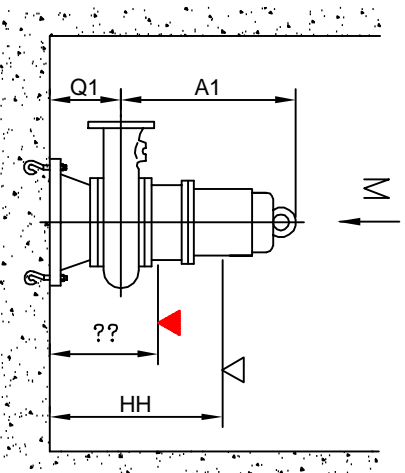
## Y 硬管移动式安装



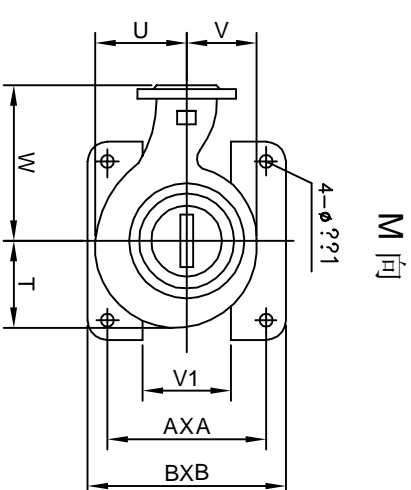
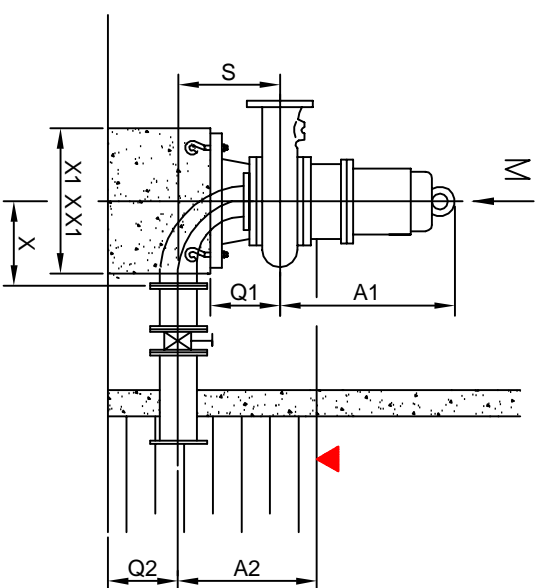
## G 固定式干式安装



## P 固定式底座安装

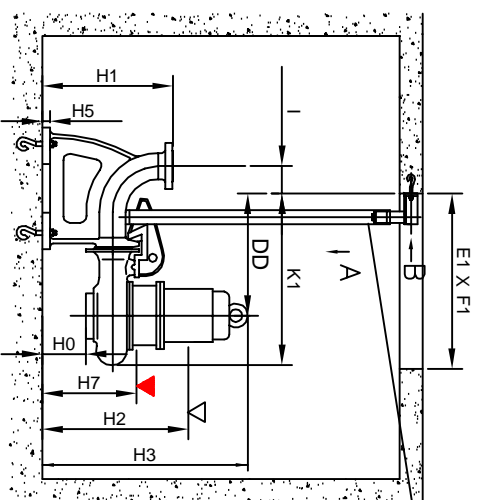


## 型号

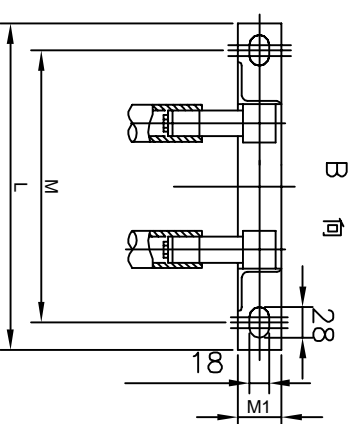


## Z 自动耦合式安装

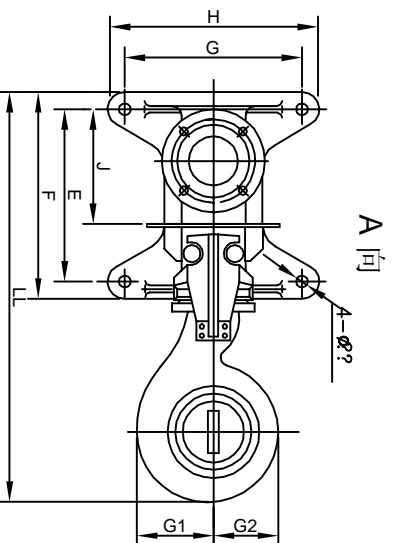
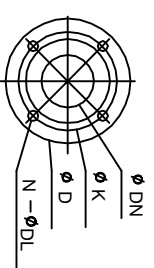
导杆参考长度=池深-H4



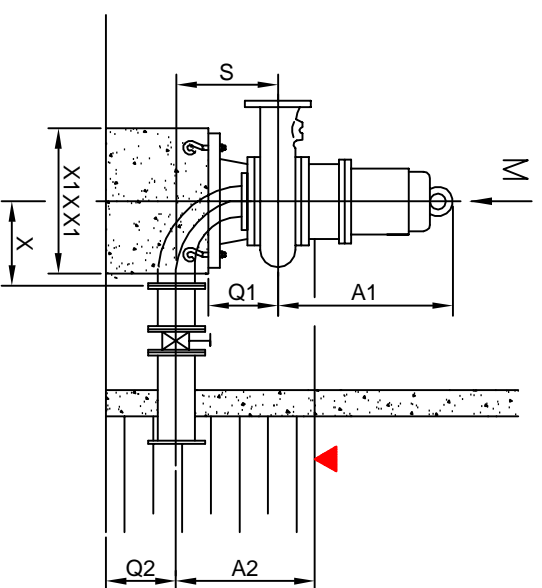
## 型号



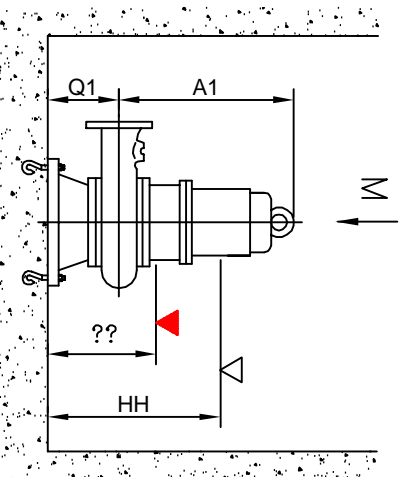
## 法兰尺寸



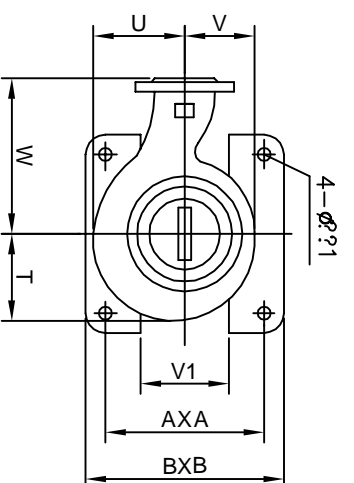
## G 固定式干式安装



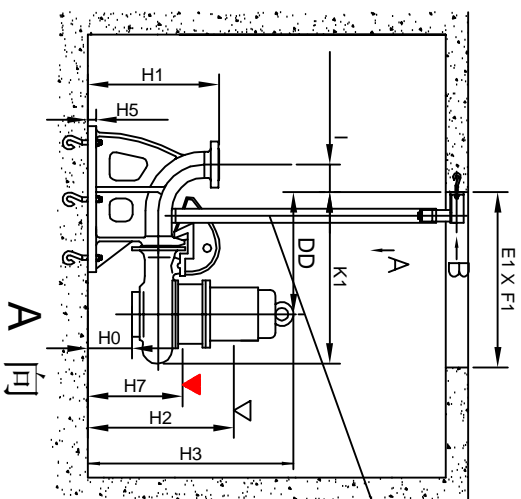
## P 固定式底座安装



## M 向

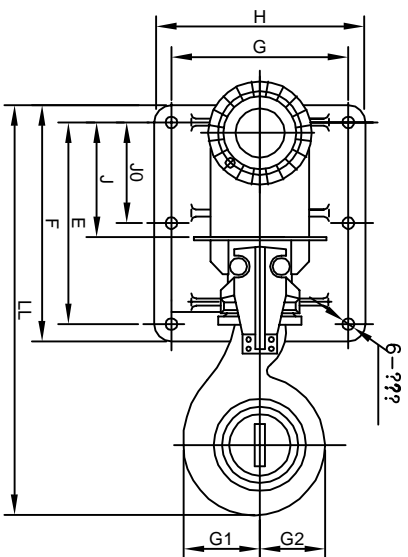
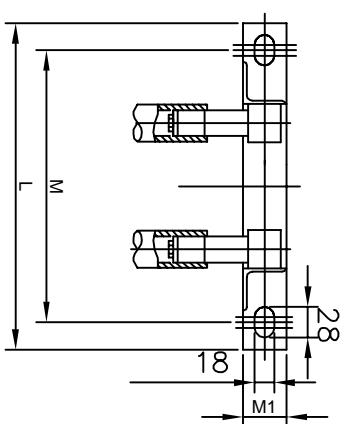


## Z 自动耦合式安装

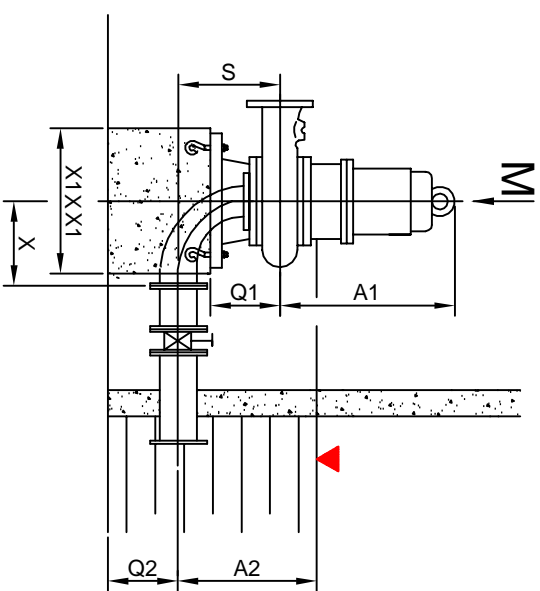


导杆参考长度=池深- H4

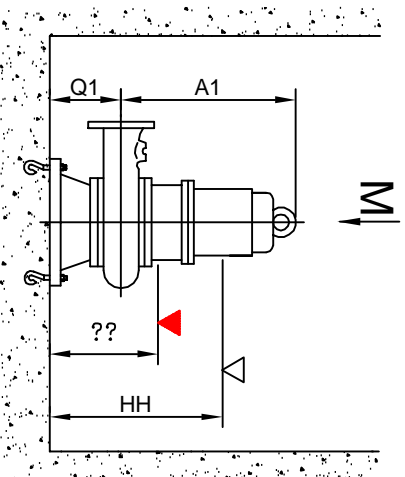
## 型号



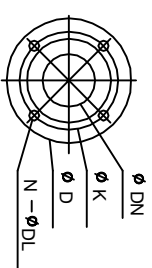
## G 固定式干式安装



## P 固定式底座安装



## 法兰尺寸



## M 向

